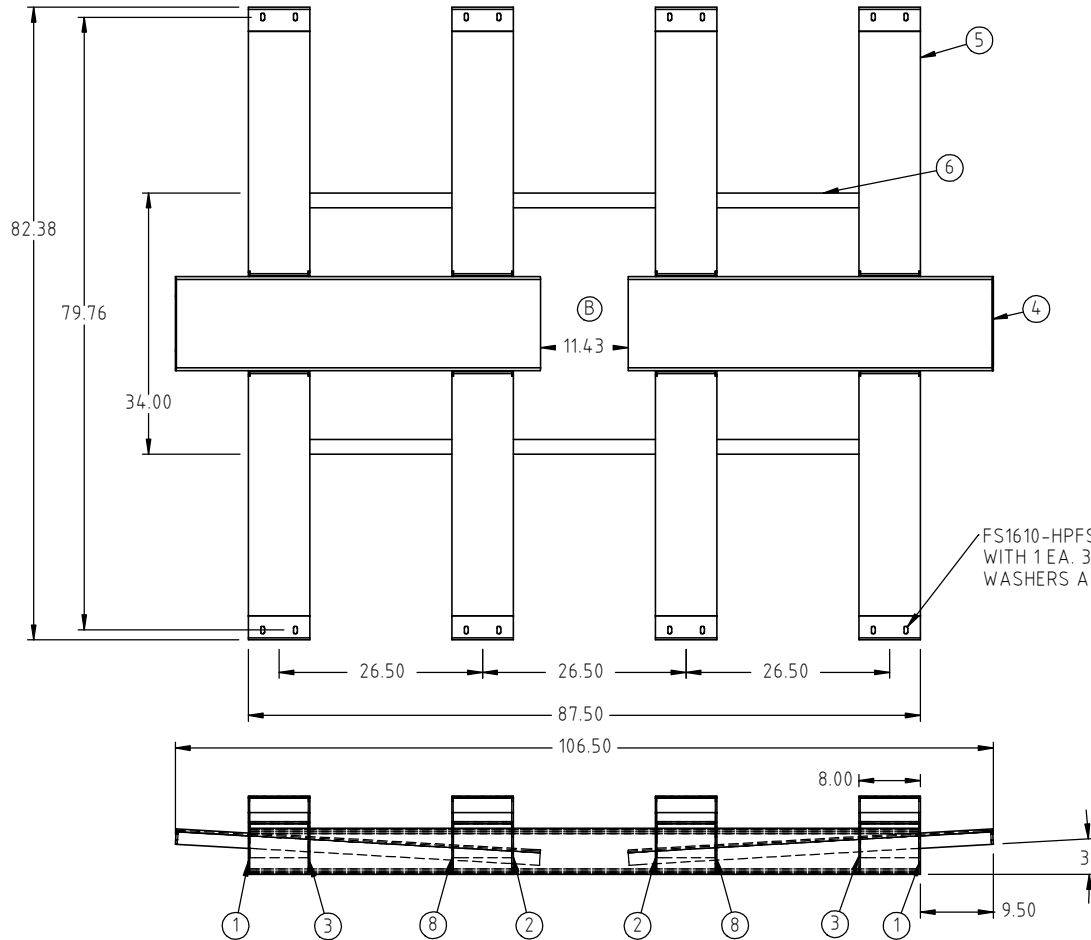


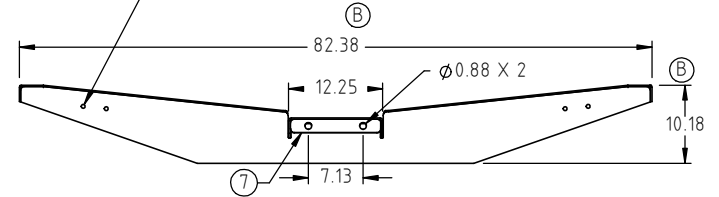
Copyright. All information furnished within this document, electronic file or design correspondence is the property of Den Hartog Industries, Inc. and shall not be used, disclosed to others or copied without the expressed written consent of Den Hartog Industries, Inc.

KEY	PART NUMBER	DESCRIPTION	QTY.
1	12889	END STRINGER-CENTER SUMP	2 (B)
2	12890	CENTER STRINGER-CENTER SUMP	2 (B)
3	12891	CENTER STRINGER-TALL-CENTER SUMP	2 (B)
4	FM1610-SKO-1	FORMED SUPPORT CHANNEL	2
5	19417	TOP PLATE	8 (B)
6	19418	SUPPORT CHANNEL	2
7	13691	1610 POWDER COAT PLATE	2 (A)
8	15200	MIDDLE STRINGER-CENTER SUMP	2 (C)

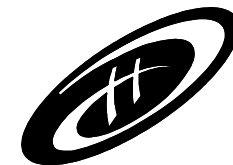


FS1610-HPFS ATTACH TO EACH SLOT WITH 1 EA. 3/8" X 2" HEX BOLT, 2 EA. FLAT WASHERS AND 1 EA. HEX NUT (16 PLACES)

FS19419 RETAINER PLATES ATTACH TO EACH HOLE WITH 1 EA. 3/8" X 1-1/4" HEX BOLT, 2 EA. FLAT WASHERS AND 1 EA. HEX NUT



C	15200 ADDED.	ADH	2/22/2021	4096	DRAWN / DATE	MATERIAL
B	19417 EXTENDED, STRINGERS ADJUSTED. 82.38" WAS 82.50". 10.18" WAS 9.29". 11.43" WAS 11.66"	ADH	6/3/2015	3077	ADH 6/4/2010	SEE COMPONENTS
A	POWDER COATING PLATE ADDED TO PRINT	ADH	8/2/2012	2465	APPR. / DATE	
REV.	DESCRIPTION	BY	DATE	CCN	REH 6/28/2010	
ALL DIMENSIONS ARE IN DECIMAL INCHES TOLERANCES UNLESS OTHERWISE SPECIFIED		THIRD ANGLE PROJECTION ANSI 14.5M		SHOT WEIGHT:		NOTES:
POLYETHYLENE METAL DECIMAL ± .125" FRACTION ± 1/4" ANGLE ± 1°		±1% @ 68°F		SHIPPING WEIGHT: 490 LBS		
				FINISH: POWDER COATING, BLACK TILE, 40012		



**Den Hartog INDUSTRIES, INC.**

Ace Roto-Mold • Injection Molding • Blow Molding • Sowjoy  
4010 HOSPERS DRIVE S. BOX 425, HOSPERS, IOWA 51238-0425

DESCRIPTION		1610 SKID-CENTER SUMP	
SCALE	N.S.	PART NO.	FM1610-SKC
		SHEET	1 OF 1