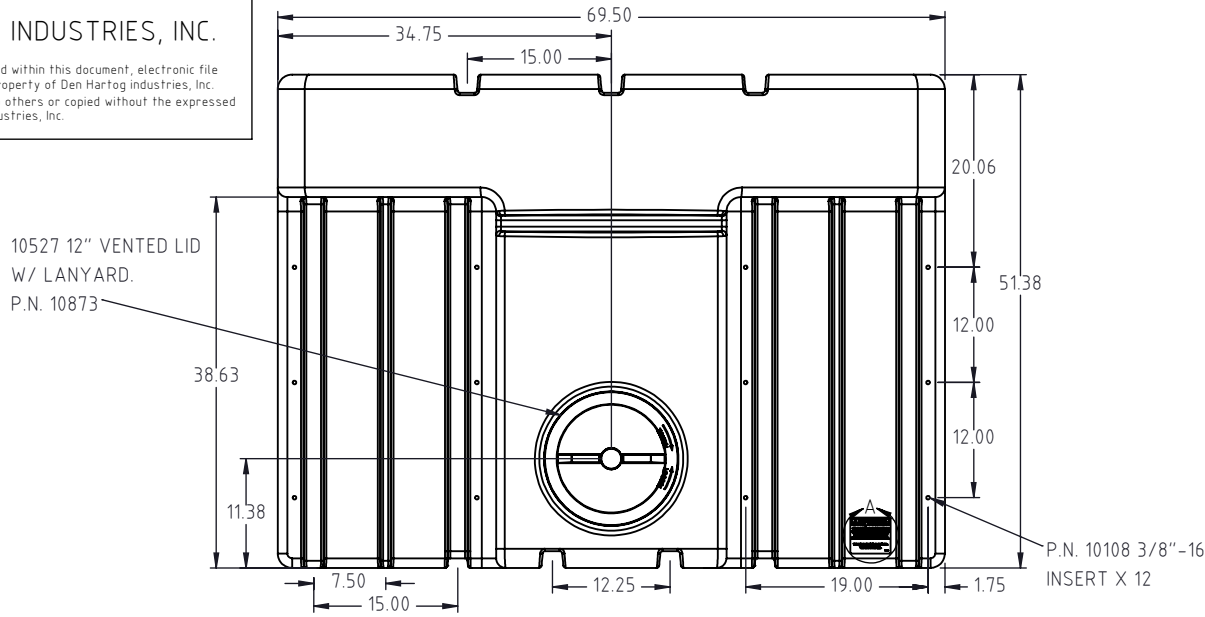
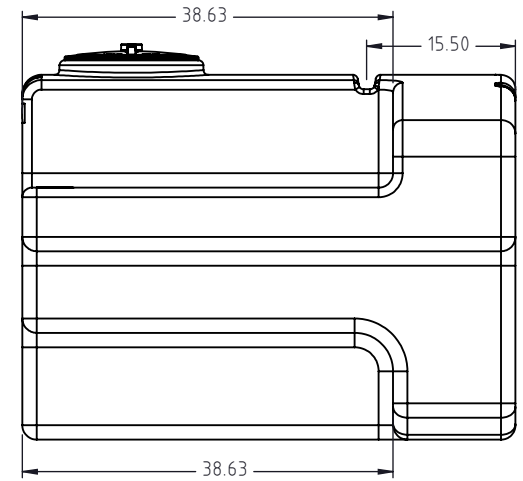
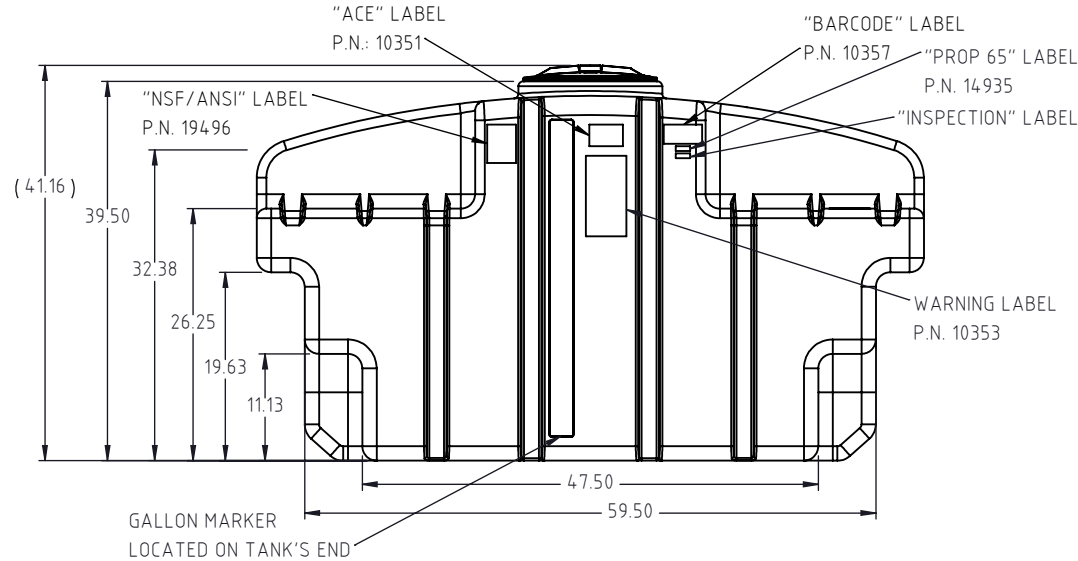


Copyright. All information furnished within this document, electronic file or design correspondence is the property of Den Hartog Industries, Inc. and shall not be used, disclosed to others or copied without the expressed written consent of Den Hartog Industries, Inc.



**⚠ IMPORTANT:**  
**USE ALL INSERTS AVAILABLE ON EACH SIDE OF TANK TO SECURE FRAMEWORK OR MOUNTING PLATE FOR ENGINE/ PUMP AND HOSE REEL IF SO EQUIPPED.**  
**TORQUE ALL BOLTS TO 12-15 FT. LBS. WITH LOCK WASHERS.**  
14723

LABEL P.N.: 14723 (A)  
 DETAIL A  
 SCALE 1: 2



DRAWN / DATE ADH 8/18/2017		MATERIAL: 14575 1.7 MELT	
APPROD. / DATE REH 8/18/2017		NOTES: 1.) 0.345" WALL	
SHOT WEIGHT: 200 LBS.		FINISH:	
SHIPPING WEIGHT: 202 LBS.			

A	14723 LABEL UPDATED	BES	7/10/2024	4614
REV.	DESCRIPTION	BY	DATE	CCN

ALL DIMENSIONS ARE IN DECIMAL INCHES TOLERANCES UNLESS OTHERWISE SPECIFIED		THIRD ANGLE PROJECTION ANSI 14.5M	
POLYETHYLENE ±1% @ 68°F	METAL DECIMAL ± .125" FRACTION ± 1/4" ANGLE ± 1°		



**Den Hartog INDUSTRIES, INC.**  
 Ace Roto-Mold • Injection Molding • Blow Molding • Sowjoy

4010 HOSPERS DRIVE S. BOX 425, HOSPERS, IOWA 51238-0425

DESCRIPTION 400 GALLON SPACE SAVER TANK		
SCALE N.S.	PART NO. SSPU0400-70	SHEET 1 OF 1