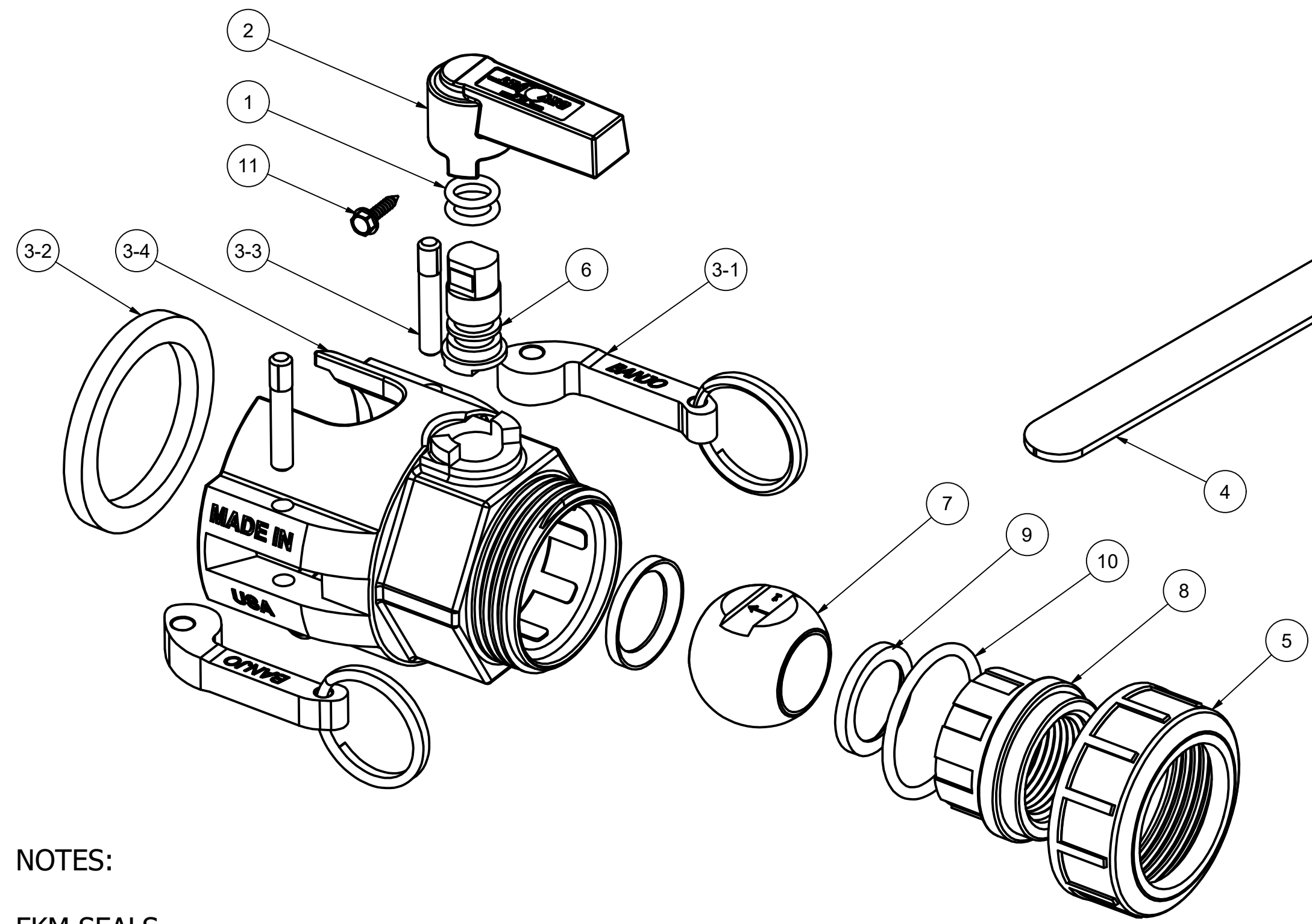
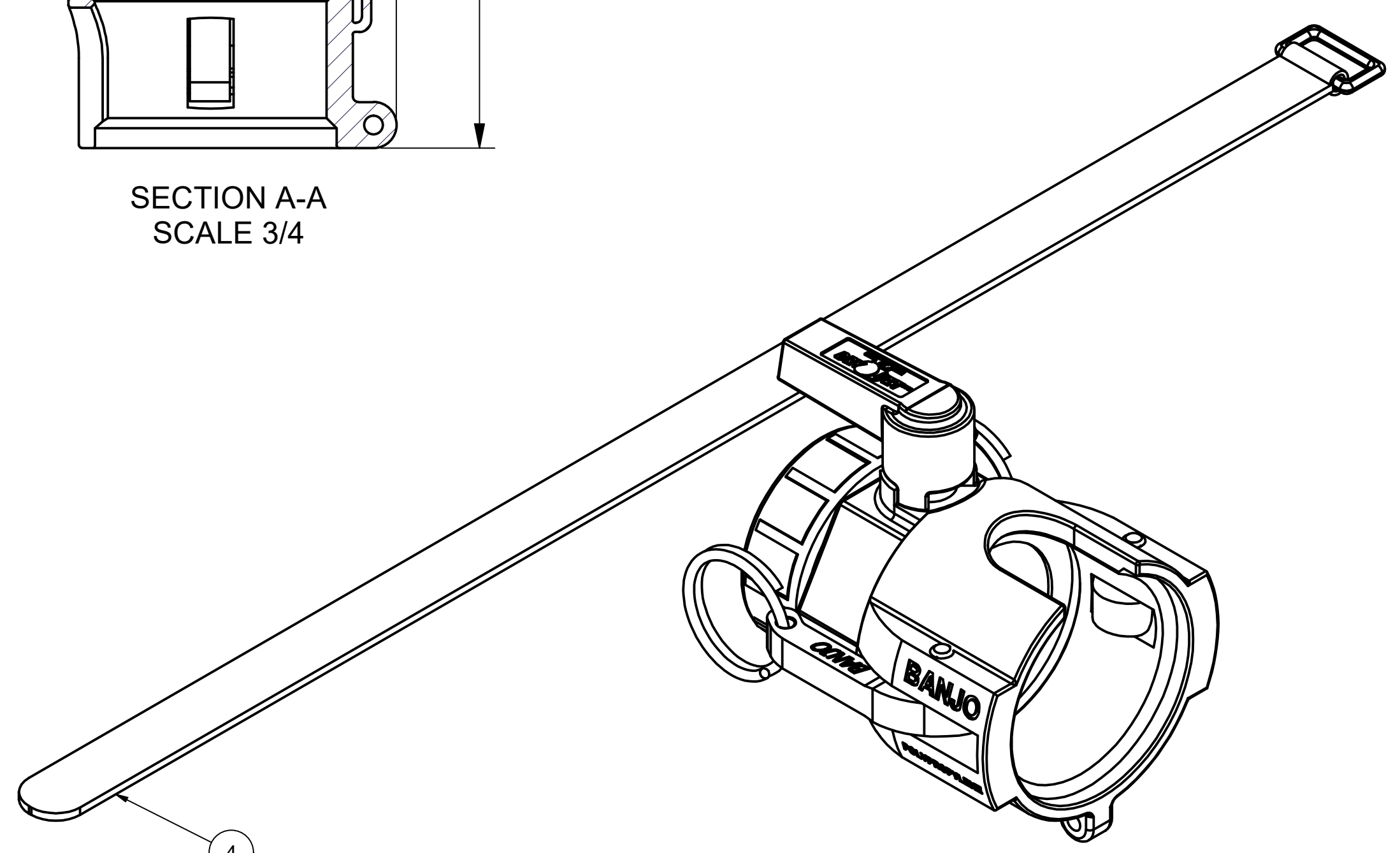



Parts List			
ITEM	QTY	PART NUMBER	DESCRIPTION
1	2	12774V	AS568A -111 O-RING, FKM, BROWN
2	1	DF10153	1" DRY FIT HANDLE
3	1	DF10254F	1" FEMALE DRY FIT BODY MACHINED
4	1	MSC0012	CAM-LOCK ARMS SECURITY VELCRO STRAP
5	1	UV10150	1" UNION VALVE END CAP
6	1	UV10151	1" UNION VALVE STEM
7	1	UV10255	1" UNION VALVE BALL, TUMBLED
8	1	UV10256	1" UNION VALVE ENDPLATE
9	2	UV10258	1" UV Seat
10	1	UV10264V	AS568A -223 O-RING, FKM, BROWN
11	1	UV15220	#6 X 5/8" HWH SMS



NOTES:
 FKM SEALS
 VELCRO STRAP MSC0012 TO BE USED AS SAFETY CLOSURE INCLUDED
 TO BE CONNECTED WITH 1" DRY FIT MALE VALVE DF100A
 COMPATIBLE WITH ANY 2" BANJO MALE CAM LEVER COUPLING

THIS DRAWING AND ALL INFORMATION CONTAINED THEREON ARE THE EXCLUSIVE PROPERTY OF BANJO CORPORATION.
 UNLESS SPECIFICALLY NOTED, THIS DRAWING AND ITEMS SHOWN ON THIS DRAWING ARE SUBJECT TO CHANGE AT ANY TIME.



BANJO
Liquid Handling Products

BANJO CORPORATION
 A UNIT OF IDEX CORPORATION
 150 BANJO DRIVE, CRAWFORDSVILLE, IN 47933
 WEB SITE: WWW.BANJOCORP.COM
 E-MAIL: BANJOSALES@IDEXCORP.COM

DESCRIPTION:
1" DRY FIT FEMALE VALVE

PART NUMBER:
DF100D