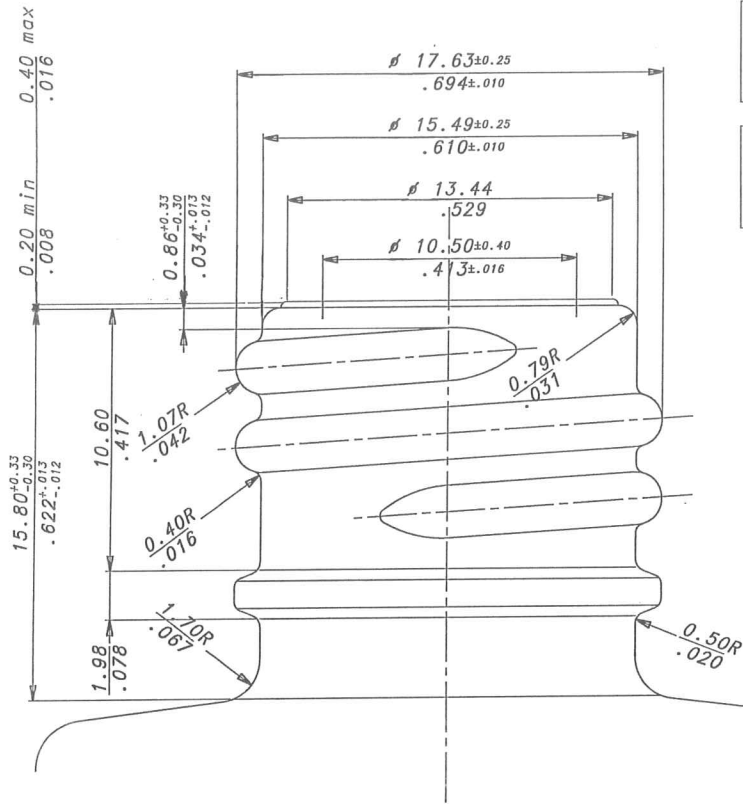
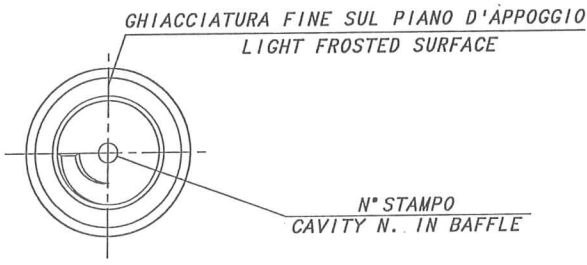
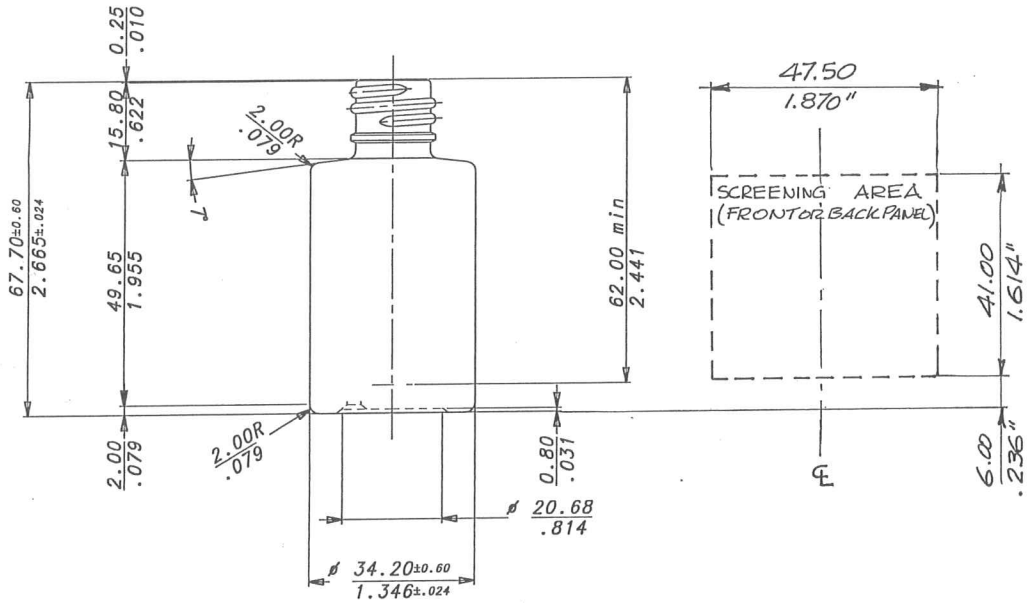


THIS PRINT IS PROPERTY OF NEW HIGH GLASS INC. AND RETURNABLE UPON REQUEST. IT MUST NOT BE REPRODUCED OR INFORMATION HEREIN TRANSMITTED IN ANY WAY WITHOUT THE WRITTEN CONSENT OF THE PROPRIETOR.



MIN. THRU BORE  $\phi$  .354  
 PICH 8 THREADS PER INCH  
 HELIX ANGLE 3° 30'  
 2 TURN OF THREADS

MINIMO PASSANTE  $\phi$  9  
 PASSO 8 FILETTI PER INCH  
 INCLINAZIONE FILETTO 3° 30'  
 2 GIRI DEL FILETTO



**NEW HIGH GLASS Inc.**  
 12713 S.W. 125 AVENUE  
 MIAMI FLORIDA 33186

REQUESTED BY: \_\_\_\_\_ DRAWING No: 4836-5  
 STYLE: THAMES 1 oz. / 18 B SCALE: NO SCALE DATE: 04/05/1995  
 FINISH: 18-415-405 Sealing Bead RIC.N.: 5712.1 DRAWN BY: Tenani  
 CAPACITY OVERFLOW: 33<sup>+1.5</sup> / <sup>-1.5</sup> ML APPROX. WEIGHT: 41 gr CHECKED BY: \_\_\_\_\_

5	AGG. DICITURA IMBOCC. E DIM. PICTURE	23/02/2010							
4	INSERITA EPIPURE "PIATTA"	05/02/2010							
3	AGGIUNTA ALTEZZA MINIMA INTERNA	05/10/1995							
2	AUMENTATI ALTEZZA E DIAMETRO CORPO DI 0.2 mm	11/07/1995							
1	AGGIUNTA GHIACCIATURA-MOD. NOME, PESO E CAP.	13/05/1995							
No	AMENDMENT	DATE							
DG	DC	UPRO	SAT	NHG	A/FI	VE/B			
1	1	1	1	3	1	1			

DIMENSIONS WITHOUT TOLLERANCES ARE IN CONFORMITY WITH ISO 2768-y