

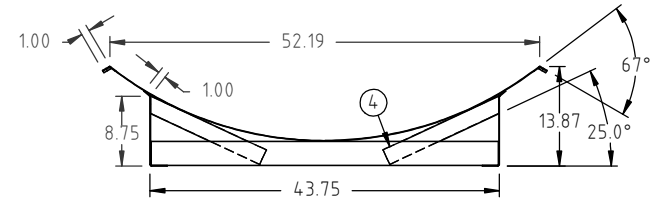
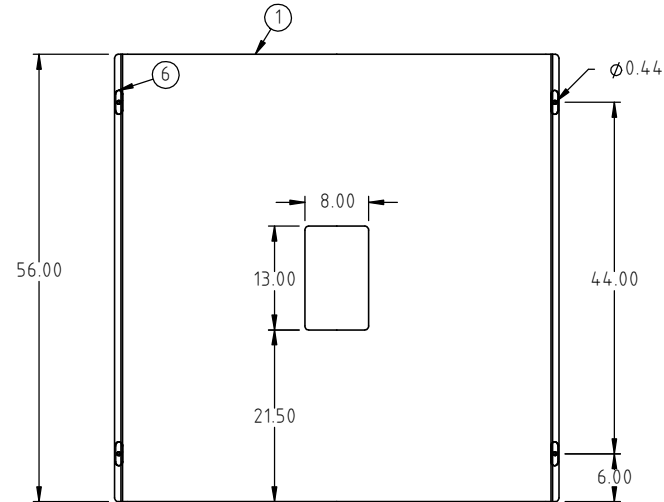
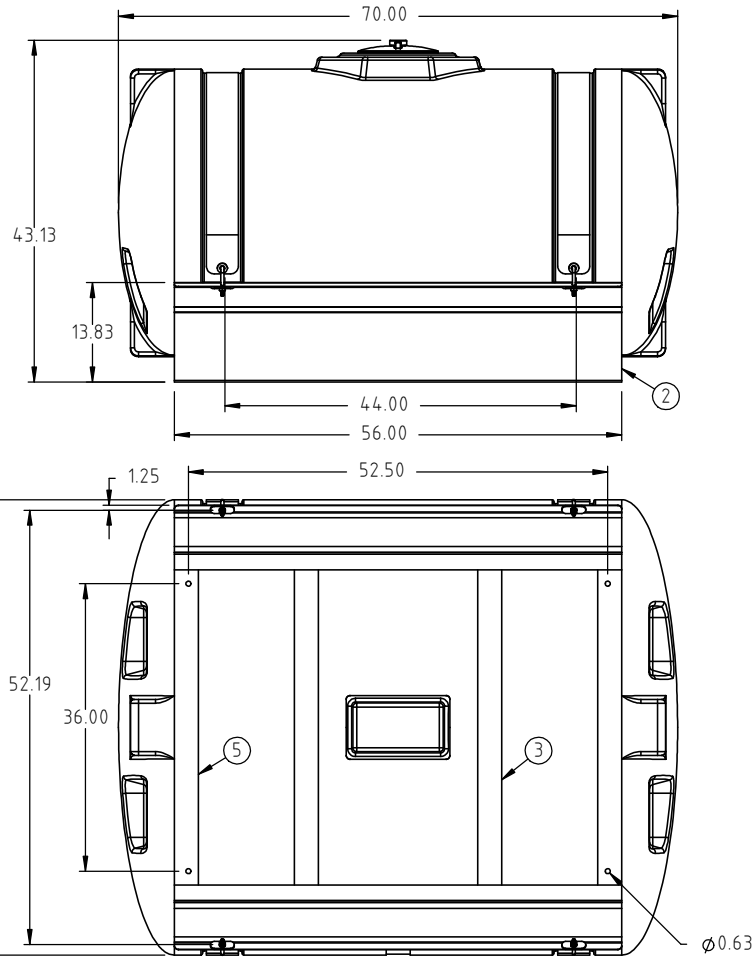
© DEN HARTOG INDUSTRIES, INC.

Copyright. All information furnished within this document, electronic file or design correspondence is the property of Den Hartog industries, Inc. and shall not be used, disclosed to others or copied without the expressed written consent of Den Hartog Industries, Inc.

KEY	PART NUMBER	DESCRIPTION	QTY.
1	HE0400-C-1	PAN	1
2	HE0400-C-2	SIDE PANEL	2
3	HE0400-C-3	BASE ANGLE STEEL	2
4	HE0400-C-4	SUPPORT STRAP	4
5	HE0400-C-5	END ANGLE STEEL (HOLES)	2
6	SJHZ0232C-4	STRAP SUPPORT, CRADLES	4

HE0400-C

C



C	DRAWING TEMPLATE/TABLE UPDATED, WEIGHT/FINISH ADDED TO PRINT	ADH 11/1/11	2319	DRAWN / DATE	MATERIAL
B	CHANGE PART #	3/30/06		ADH 7/23/07	
A	CHANGE WIDTH OF BASE	4/15/04		APPRD. / DATE	
REV	DESCRIPTION	BY / DATE	CCN	REH 10/5/07	
ALL DIMENSIONS ARE IN DECIMAL INCHES TOLERANCES UNLESS OTHERWISE SPECIFIED		THIRD ANGLE PROJECTION ANSI 14.5M		SHOT WEIGHT:	NOTES:
POLYETHYLENE		METAL DECIMAL ± .125" FRACTION ± 1/4" ANGLE ± 1°		SHIPPING WEIGHT: 190.00 LBS	
±1% @ 68°F				FINISH: POWDER COATING, BLACK TILE, 40012	



**Den Hartog**  
INDUSTRIES, INC.

Ace Roto-Mold Injection Molding Blow Molding Sowjoy

4010 HOSPERS DRIVE S. BOX 425, HOSPERS, IOWA 51238-0425

DESCRIPTION	ACE 400 GALLON ELLIPTICAL TANK AND CRADLE ASSEMBLY	
SCALE	N.S.	PART NO. HE0400-C