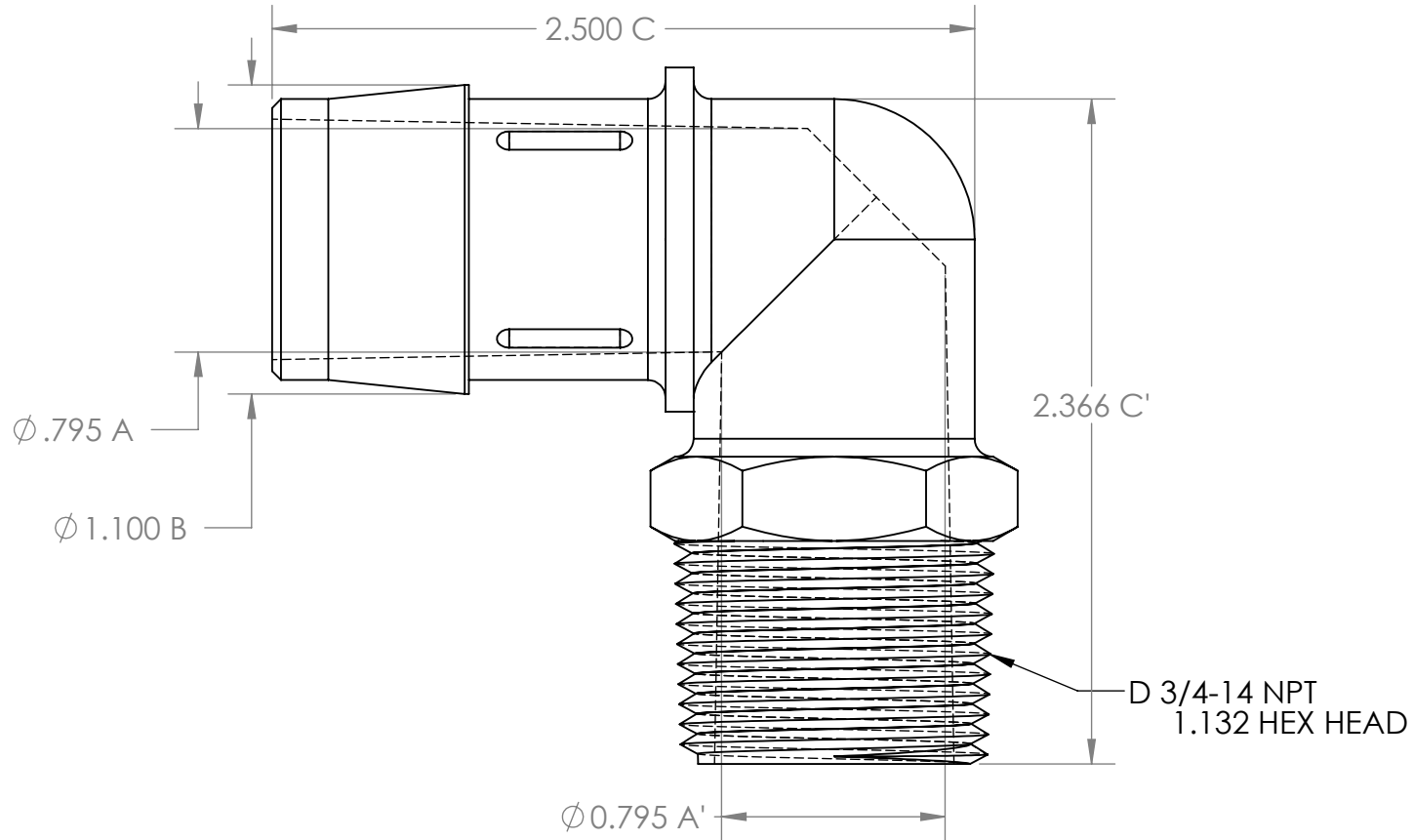


REV	ECO#	DATE	REVISION RECORD	DWG.BY	APPR.BY
1	N/A	5-24-01	ORIGINAL SUBMITTAL	SML	LM
2	030201	8-6-03	NEW FORMAT / NEW TITLE BLOCK	JGO	EA
3	434	1-25-12	NEW PRINT FORMAT	RP	MC



- NOTES
 1. ALL DIMENSIONS TYPICAL
 2. VIEW SHOWN IS LOGO SIDE UP
 3. NO MOLD PARTING LINE ALLOWED ON CONICAL BARB SURFACES
 4. DOT ON BARB NECK IS A CAVITY - OR CAVITY IS NUMBERED
 5. RAISED FEATURE ON BARB NECK (IF SHOWN) = ANTI-ROTATION DEVICE

This drawing is issued in confidence. It may not be disclosed or reproduced without written permission from the Eldon James Corp

Shown: 4 most recent title block revisions

REV	ECO#	DATE	TITLE BLOCK REVISION RECORD
K	070860	7/27/2009	Add Crystal Vu (CVU) material A,B $\pm .021$ & C,D,E,F $\pm .035$
L	425	10/24/11	ADDED DOW ENGAGE AND (WN)
M	426	10/25/11	Changed Black Nylon Tolerance for C,D,E,F from +.000 to +.020
N	432	12/5/2011	Removed " DATE PART CREATED"

Material / Tolerance:	A & B	C, D, E, F
Dow Engage 8402:	$\pm .018$	$\pm .023$
Acetal (AC):	$\pm .020$	$\pm .050$
Crystal Vu (CVU):	$\pm .021$	$\pm .035$
Nylon 6/6 (NN)(MN)(WN):	$\pm .016$	$\pm .020$
Black Nylon 6/6 (BN):	$\pm .016$	$\pm .020$
Glass-Filled Nylon (GFBN):	$\pm .020$	$+ .060 / - .000$
Polypropylene (PP)(NP)(WP):	$\pm .018$	$\pm .023$
HD Polyethylene (HDPE):	$\pm .015$	$\pm .045$
Kynar-Flex (NKF):	$\pm .026$	$+ .026 / - .060$
Nat./Gray Kynar (NK)(PVDF):	$\pm .020$	$+ .000 / - .070$
Polycarbonate (PC):	$\pm .016$	$\pm .031$
A.B.S. (ABS):	$\pm .016$	$\pm .031$



Eldon James Corp.
 www.eldonjames.com

DESCRIPTION			
3/4-14 NPT TO 1" BARBED ELBOW			
DRAWN BY JGO	APPROVED BY EA	APPROVAL DATE 8-6-03	DRAWING NAME QC DRAWING
SCALE NTS	SIZE A	SHEET 1 OF 1	TITLE BLOCK REV. N
All printed copies of drawing are for reference only			PART NO. L12-16
			REV. 3